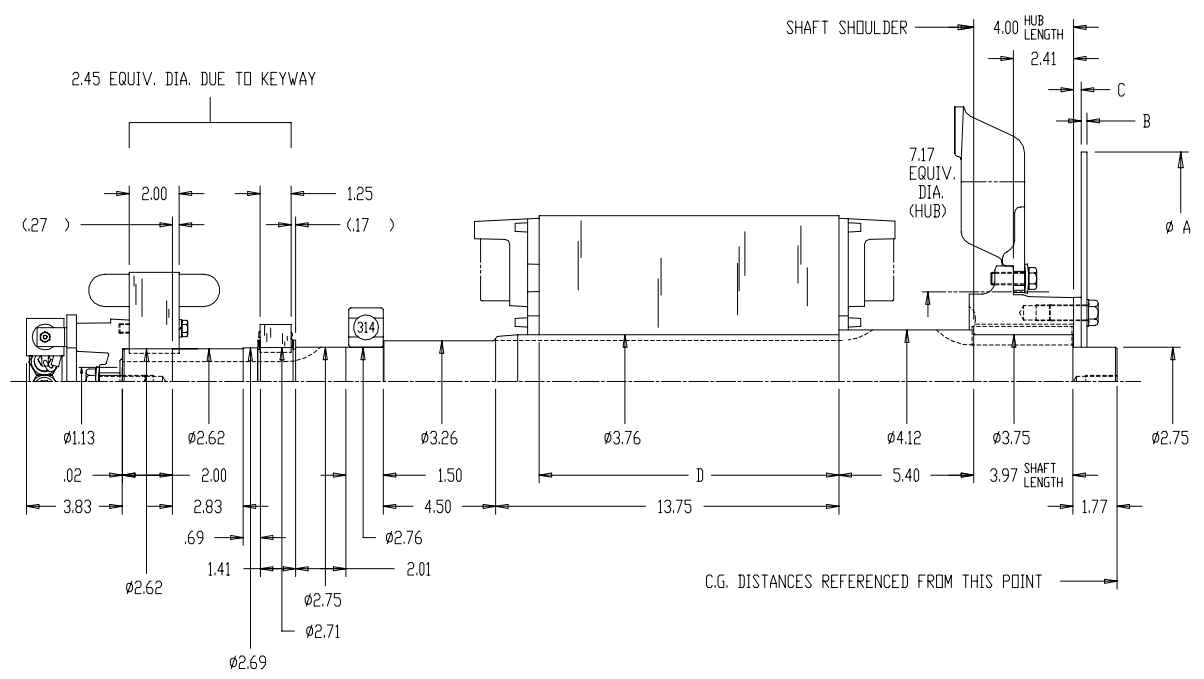


| DASH | SAE DISC NO. | DISC & SPACER |     |      | SHAFT & HUB |     |       | FAN |     |      | MAIN ROTOR |      |       | P.M.G. ROTOR |     |       | EXCITER ROTOR |     |       | TOTAL |      |       | A     | B   | C   | D     | UNBALANCED MAGNETIC PULL MAIN ROTOR |
|------|--------------|---------------|-----|------|-------------|-----|-------|-----|-----|------|------------|------|-------|--------------|-----|-------|---------------|-----|-------|-------|------|-------|-------|-----|-----|-------|-------------------------------------|
|      |              | WGT           | WK2 | C.G. | WGT         | WK2 | C.G.  | WGT | WK2 | C.G. | WGT        | WK2  | C.G.  | WGT          | WK2 | C.G.  | WGT           | WK2 | C.G.  | WGT   | WK2  | C.G.  |       |     |     |       |                                     |
| -1   | DELCO        | 16            | 4.6 | 1.62 | 142         | 3.6 | 14.00 | 12  | 5.2 | 4.97 | 323        | 54.1 | 15.64 | 4            | .1  | 33.70 | 32            | 2.4 | 38.56 | 529   | 70.0 | 16.06 | 17.75 | .24 | -   | 9.00  | 66                                  |
| -2   | 11 1/2       | 17            | 2.0 | 1.01 | 142         | 3.6 | 14.00 | 12  | 5.2 | 4.97 | 323        | 54.1 | 15.64 | 4            | .1  | 33.70 | 32            | 2.4 | 38.56 | 530   | 67.4 | 16.01 | 13.87 | .24 | .84 | 9.00  | 66                                  |
| -3   | 14           | 20            | 5.4 | 1.35 | 142         | 3.6 | 14.00 | 12  | 5.2 | 4.97 | 323        | 54.1 | 15.64 | 4            | .1  | 33.70 | 32            | 2.4 | 38.56 | 533   | 70.8 | 15.94 | 18.37 | .24 | .30 | 9.00  | 66                                  |
| -4   | 18           | 21            | 9.6 | 1.64 | 142         | 3.6 | 14.00 | 12  | 5.2 | 4.97 | 323        | 54.1 | 15.64 | 4            | .1  | 33.70 | 32            | 2.4 | 38.56 | 534   | 75.0 | 15.92 | 22.50 | .19 | -   | 9.00  | 66                                  |
| -5   | DELCO        | 16            | 4.6 | 1.62 | 142         | 3.6 | 14.00 | 12  | 5.2 | 4.97 | 334        | 56.1 | 15.83 | 4            | .1  | 33.70 | 32            | 2.4 | 38.56 | 540   | 72.0 | 16.16 | 17.75 | .24 | -   | 9.38  | 69                                  |
| -6   | 11 1/2       | 17            | 2.0 | 1.01 | 142         | 3.6 | 14.00 | 12  | 5.2 | 4.97 | 334        | 56.1 | 15.83 | 4            | .1  | 33.70 | 32            | 2.4 | 38.56 | 541   | 69.4 | 16.12 | 13.87 | .24 | .84 | 9.38  | 69                                  |
| -7   | 14           | 20            | 5.4 | 1.35 | 142         | 3.6 | 14.00 | 12  | 5.2 | 4.97 | 334        | 56.1 | 15.83 | 4            | .1  | 33.70 | 32            | 2.4 | 38.56 | 544   | 72.8 | 16.05 | 18.37 | .24 | .30 | 9.38  | 69                                  |
| -8   | 18           | 21            | 9.6 | 1.64 | 142         | 3.6 | 14.00 | 12  | 5.2 | 4.97 | 334        | 56.1 | 15.83 | 4            | .1  | 33.70 | 32            | 2.4 | 38.56 | 545   | 77.0 | 16.03 | 22.50 | .19 | -   | 9.38  | 69                                  |
| -9   | DELCO        | 16            | 4.6 | 1.62 | 142         | 3.6 | 14.00 | 12  | 5.2 | 4.97 | 406        | 68.1 | 17.02 | 4            | .1  | 33.70 | 32            | 2.4 | 38.56 | 612   | 84.0 | 16.90 | 17.75 | .24 | -   | 11.75 | 86                                  |
| -10  | 11 1/2       | 17            | 2.0 | 1.01 | 142         | 3.6 | 14.00 | 12  | 5.2 | 4.97 | 406        | 68.1 | 17.02 | 4            | .1  | 33.70 | 32            | 2.4 | 38.56 | 613   | 81.4 | 16.87 | 13.87 | .24 | .84 | 11.75 | 86                                  |

NOTES:  
 1- UNITS: WGT(LBm), WK2(LBm-FT2), C.G.(IN.), UNBALANCED MAGNETIC PULL(LBF)  
 2- UNBALANCED MAGNETIC PULLS ARE PER .001 IN. ROTOR DISPLACEMENT.  
 3- SHAFT DWG: B-525538-2250

|     |         |   |      |   |   |
|-----|---------|---|------|---|---|
| 9   | 2-16-95 | REV. EXCITER KWH AND ADDED 2.45 EQUIV. DIA. CN 19557      | TM   | ✓ SURFACE ROUGHNESS UNLESS NOTED OTHERWISE                          | UNLESS OTHERWISE SPECIFIED DIMENSIONS ARE IN INCHES TOL. ON XX± XXX±.005 XXXX±.0005 ANGLES± |
| 8   | 7-22-93 | (2) DRIVE HUB SET SCREWS DELETED CN 16216                 | TM   | MATL SPEC   | DRAWN TM 10-17-90   |
| 7   | 7-23-92 | 1.77 EXT. LENGTH WAS 2.03, REV. C.G.'s BY (-.26) CN 14360 | TM   | FINISH  | CHKD BY GK 10-17-90   |
| REV | DATE    | CHANGE  | NAME | PART NAME ROTOR WGT & WK2 432 FR. GEN. - RANDOM WOUND - LOW VOLTAGE | APPD BY GJM 10-17-90  |
|     |         |   |      | PURCHASED   | DISTRIBUTION - WA - L <del>X</del> - W <del>X</del> - L <del>X</del>                        |
|     |         |   |      |   | CADD FILE NO. 525662x1  |





| DASH | SAE DISC NO. | DISC & SPACER |     |      | SHAFT & HUB |     |       | FAN |     |      | MAIN ROTOR |      |       | P.M.G. ROTOR |     |       | EXCITER ROTOR |     |       | TOTAL |      |       | A     | B   | C   | D     | UNBALANCED MAGNETIC PULL MAIN ROTOR |
|------|--------------|---------------|-----|------|-------------|-----|-------|-----|-----|------|------------|------|-------|--------------|-----|-------|---------------|-----|-------|-------|------|-------|-------|-----|-----|-------|-------------------------------------|
|      |              | WGT           | WK2 | C.G. | WGT         | WK2 | C.G.  | WGT | WK2 | C.G. | WGT        | WK2  | C.G.  | WGT          | WK2 | C.G.  | WGT           | WK2 | C.G.  | WGT   | WK2  | C.G.  |       |     |     |       |                                     |
| -11  | 14           | 20            | 5.4 | 1.35 | 142         | 3.6 | 14.00 | 12  | 5.2 | 4.97 | 406        | 68.1 | 17.02 | 4            | .1  | 33.70 | 32            | 2.4 | 38.56 | 616   | 84.8 | 16.81 | 18.37 | .24 | .30 | 11.75 | 86                                  |
| -12  | 18           | 21            | 9.6 | 1.64 | 142         | 3.6 | 14.00 | 12  | 5.2 | 4.97 | 406        | 68.1 | 17.02 | 4            | .1  | 33.70 | 32            | 2.4 | 38.56 | 617   | 89.0 | 16.79 | 22.50 | .19 | -   | 11.75 | 86                                  |
| -13  | DELCO        | 16            | 4.6 | 1.62 | 142         | 3.6 | 14.00 | 12  | 5.2 | 4.97 | 414        | 69.4 | 17.14 | 4            | .1  | 33.70 | 32            | 2.4 | 38.56 | 620   | 85.3 | 17.00 | 17.75 | .24 | -   | 12.00 | 88                                  |
| -14  | 11 1/2       | 17            | 2.0 | 1.01 | 142         | 3.6 | 14.00 | 12  | 5.2 | 4.97 | 414        | 69.4 | 17.14 | 4            | .1  | 33.70 | 32            | 2.4 | 38.56 | 621   | 82.7 | 16.96 | 13.87 | .24 | .84 | 12.00 | 88                                  |
| -15  | 14           | 20            | 5.4 | 1.35 | 142         | 3.6 | 14.00 | 12  | 5.2 | 4.97 | 414        | 69.4 | 17.14 | 4            | .1  | 33.70 | 32            | 2.4 | 38.56 | 624   | 86.1 | 16.89 | 18.37 | .24 | .30 | 12.00 | 88                                  |
| -16  | 18           | 21            | 9.6 | 1.64 | 142         | 3.6 | 14.00 | 12  | 5.2 | 4.97 | 414        | 69.4 | 17.14 | 4            | .1  | 33.70 | 32            | 2.4 | 38.56 | 625   | 90.3 | 16.87 | 22.50 | .19 | -   | 12.00 | 88                                  |
| -17  | DELCO        | 16            | 4.6 | 1.62 | 142         | 3.6 | 14.00 | 12  | 5.2 | 4.97 | 311        | 52.2 | 15.45 | 4            | .1  | 33.70 | 32            | 2.4 | 38.56 | 517   | 68.1 | 15.95 | 17.75 | .24 | -   | 8.62  | 63                                  |
| -18  | 11 1/2       | 17            | 2.0 | 1.01 | 142         | 3.6 | 14.00 | 12  | 5.2 | 4.97 | 311        | 52.2 | 15.45 | 4            | .1  | 33.70 | 32            | 2.4 | 38.56 | 518   | 65.5 | 15.90 | 13.87 | .24 | .84 | 8.62  | 63                                  |
| -19  | 14           | 20            | 5.4 | 1.35 | 142         | 3.6 | 14.00 | 12  | 5.2 | 4.97 | 311        | 52.2 | 15.45 | 4            | .1  | 33.70 | 32            | 2.4 | 38.56 | 521   | 68.9 | 15.83 | 18.37 | .24 | .30 | 8.62  | 63                                  |
| -20  | 18           | 21            | 9.6 | 1.64 | 142         | 3.6 | 14.00 | 12  | 5.2 | 4.97 | 311        | 52.2 | 15.45 | 4            | .1  | 33.70 | 32            | 2.4 | 38.56 | 522   | 73.1 | 15.82 | 22.50 | .19 | -   | 8.62  | 63                                  |

NOTES:  
 1- UNITS: WGT(LBm), WK2(LBm-FT2), C.G.(IN.), UNBALANCED MAGNETIC PULL(LBF)  
 2- UNBALANCED MAGNETIC PULLS ARE PER .001 IN. ROTOR DISPLACEMENT.  
 3- SHAFT DWG: B-525538-2250

|     |         |   |      |  |   |
|-----|---------|---|------|--|---|
| 10  | 2-16-95 | REV. EXCITER KWY AND ADDED 2.45 EQUIV. DIA. CN 19557      | TM   | ✓ SURFACE ROUGHNESS UNLESS NOTED OTHERWISE                           | UNLESS OTHERWISE SPECIFIED DIMENSIONS ARE IN INCHES TOL. ON XX± .XXX±.005 .XXXX±.0005 ANGLES± |
| 9   | 7-22-93 | (2) DRIVE HUB SET SCREWS DELETED CN 16216                 | TM   | MATL SPEC  | DRAWN TM 10-17-90   |
| 8   | 7-23-92 | 1.77 EXT. LENGTH WAS 2.03, REV. C.G.'S BY (-.26) CN 14360 | TM   | FINISH   | CHKD BY GK 10-17-90   |
| REV | DATE    | CHANGE  | NAME | PART NAME ROTOR WGT & WK2 432 FR. GEN. - RANDOM WOUND - LOW VOLTAGE  | APPD BY GJM 10-17-90  |
|     |         | PURCHASED   |      | DISTRIBUTION - WA - L <del>X</del> - W <del>X</del> - L <del>X</del> | DRWG NO B-525662 PAGE 2 OF 3  |
|     |         |   |      | CADD FILE NO. 525662x2   |   |