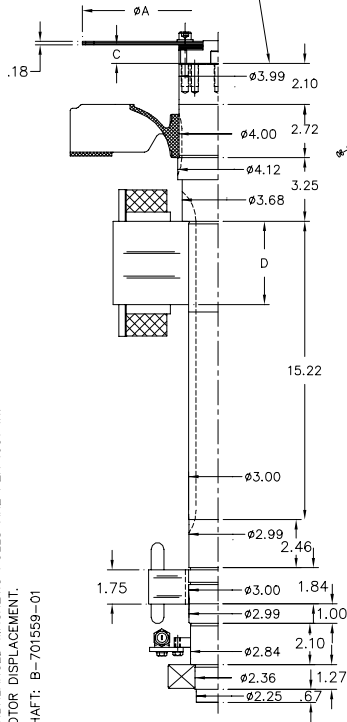


C.G. DISTANCES REFERENCED FROM THIS POINT



NOTES:

- 1— UNITS: WGT (Lbm), WK² (Lbm FT²), CG (IN.), UNBALANCED MAGNETIC PULL (Lbf).
- 2— UNBALANCED MAGNETIC PULLS ARE PER .001 IN. ROTOR DISPLACEMENT.
- 3— SHAFT: B-701559-01

DASH	SAE DISC#	SAE ADAPTER NO.	SHAFT & HUB			DISCS & SPACERS			FAN			MAIN ROTOR			EXCITER			TOTAL			77206			UNBALANCED MAGNETIC PULL MAIN ROTOR
			WGT	WK ²	CG	WGT	WK ²	CG	WGT	WK ²	CG	WGT	WK ²	CG	WGT	WK ²	CG	WGT	WK ²	CG	A	C	D	
1	7.5	4	76	.8	14.07	4	.3	-.09	7	.7	3.32	289	33.0	14.82	18	.9	26.72	394	35.7	14.86	9.50	0	13.50	128
2	8	3 & 4	76	.8	14.07	5	.4	-1.33	7	.7	3.32	289	33.0	14.82	18	.9	26.72	395	35.8	14.81	10.38	1.24	13.50	128
3	10	2,3 & 4	76	.8	14.07	7	.9	-1.03	7	.7	3.32	289	33.0	14.82	18	.9	26.72	397	36.3	14.73	12.38	.94	13.50	128
4	11.5	1,2, & 3	76	.8	14.07	8	1.4	-.45	7	.7	3.32	289	33.0	14.82	18	.9	26.72	398	36.8	14.71	13.88	.36	13.50	128
14	1		.76	.8	14.07	14	3.9	-1.32	7	.7	3.32	289	33.0	14.82	18	.9	26.72	404	39.3	14.45	18.38	1.30	13.50	128

		TOLERANCES UNLESS SPECIFIED		REGAL-BELOIT <i>Motor</i> <small>Electric Motors</small>		DRAWN KL 04-17-1995	
NO.	REVISION	BY	DATE	ML	INCHES	CHK	PR
4	REVISED TO UPDATE SHAFT CN 9863	HLB	09-25-2002	ML	± .0005	CHK	PR
3	EXCITER ROTOR POSITION CORRECTED CN-8590	DRS	05-15-1998	.XX	± .001	APPD	LS
2	REVISED TABULATION CN-7183	KL	06-11-1995	.XXX	± .001	SCALE	
1	NEW DRAWING EJS-10273	KL	04-24-1995	.XXXX	± .001	REF	
						FMF	
						PREV	
THIS DRAWING IN DESIGN AND DETAIL IS OUR PROPERTY AND MUST NOT BE USED EXCEPT IN CONNECTION WITH OUR WORK ALL RIGHTS OF DESIGN AND INVENTION ARE RESERVED THIS IS AN ELECTRONICALLY GENERATED DOCUMENT - DO NOT SCALE THIS PRINT				RFP	CAD FILE 772206x1	SIZE	DRAWING NO. PAGE OF REV.
				DIST	WA-LM-SB	B	77206 4