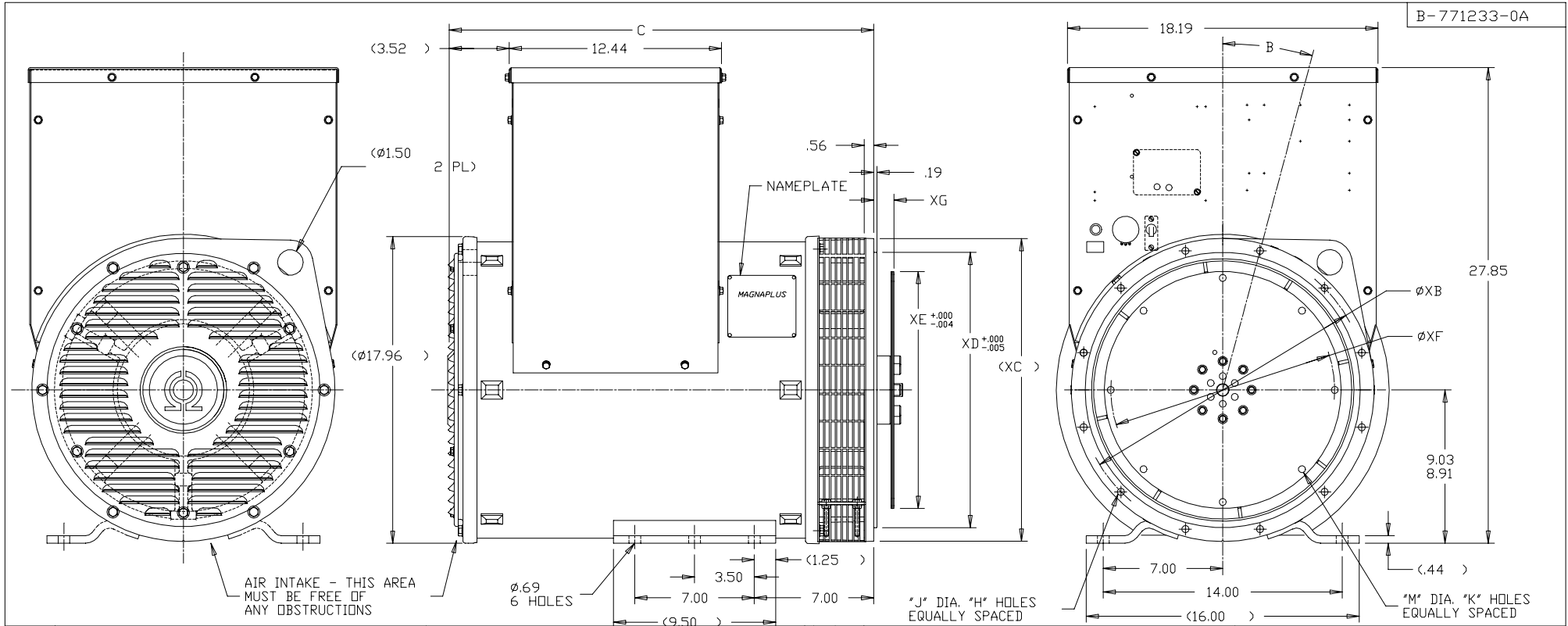


B-771233-0A



MTG CODE	ADAPTER							DRIVE DISC						
	SAE	H	J	XB	XC	XD	B	SAE	K	M	XE	XF	XG	XJ
G	#4	12	.42	15.00	17.75	14.250	15°	#7 1/2	8	.34	9.499	8.75	1.19	.62
C	#4	12	.42	15.00	17.75	14.250	15°	#8	6	.41	10.374	9.62	2.44	1.88
Y	#4	12	.42	15.00	17.75	14.250	15°	#10	8	.41	12.374	11.62	2.12	1.56
X	#3	12	.42	16.88	17.75	16.125	15°	#8	6	.41	10.374	9.62	2.44	.88
D	#3	12	.42	16.88	17.75	16.125	15°	#10	8	.41	12.374	11.62	2.12	.56
Z	#3	12	.42	16.88	17.75	16.125	15°	DELCO 12.75	4	.53	12.749	11.00	0.00	0.00
A	#3	12	.42	16.88	17.75	16.125	15°	#11 1/2	8	.41	13.874	13.12	1.56	0.00

MTG CODE	ADAPTER							DRIVE DISC						
	SAE	H	J	XB	XC	XD	B	SAE	K	M	XE	XF	XG	
-	#3	12	.42	15.00	17.75	14.250	15°	PERKINS MEXICO	8	.53	18.374	17.25	.66	
K	#2	12	.42	18.38	19.25	17.625	15°	#10	8	.41	12.374	11.62	2.12	
B	#2	12	.42	18.38	19.25	17.625	15°	#11 1/2	8	.41	13.874	13.12	1.56	
N	#2	12	.42	18.38	19.25	17.625	15°	DELCO 15.50	8	.66	15.499	13.88	.72	
E	#1	12	.48	20.88	21.75	20.125	15°	#11 1/2	8	.41	13.874	13.12	1.56	
F	#1	12	.48	20.88	21.75	20.125	15°	#14	8	.53	18.374	17.25	1.00	
H	#1	12	.48	20.88	21.75	20.125	15°	DELCO 17.75	8	.66	17.749	15.50	.72	

FRAME	C
361	24.88
362	28.50

U.S. CUSTOMARY : D.L. INCHES
METRIC : D.L. METRIC

REV	DATE	CHANGE
5	10-03-1998	9.03/8.91 WAS 9.00/8.94 CN-8406
4	10-10-1997	REVISED DRIPCOVER TO LOUVERED CN-8288
3	09-16-1997	ADDED NEW DRIP COVER CN 7161

DRS	✓ MAX. SURFACE ROUGHNESS UNLESS NOTED OTHERWISE	UNLESS OTHERWISE SPECIFIED DIMENSIONS ARE IN INCHES TOL. ON XX± .06 XXX±.005 XXXX±.0005 ANGLES± 7'30"
DRS	MATL SPEC	
KL	FINISH	
		DRAWN DA 05/19/94 CHKD BY PR 05/19/94 APPD BY LS 05/19/94
PART NAME OUTLINE 361-362 MAGNAPLUS 1 BRG - STD CONN. BOX		DRWG NO B-771233-0A
PURCHASED		DISTRIBUTION - W - L - W - LM
CADD FILE NO.		7712330A