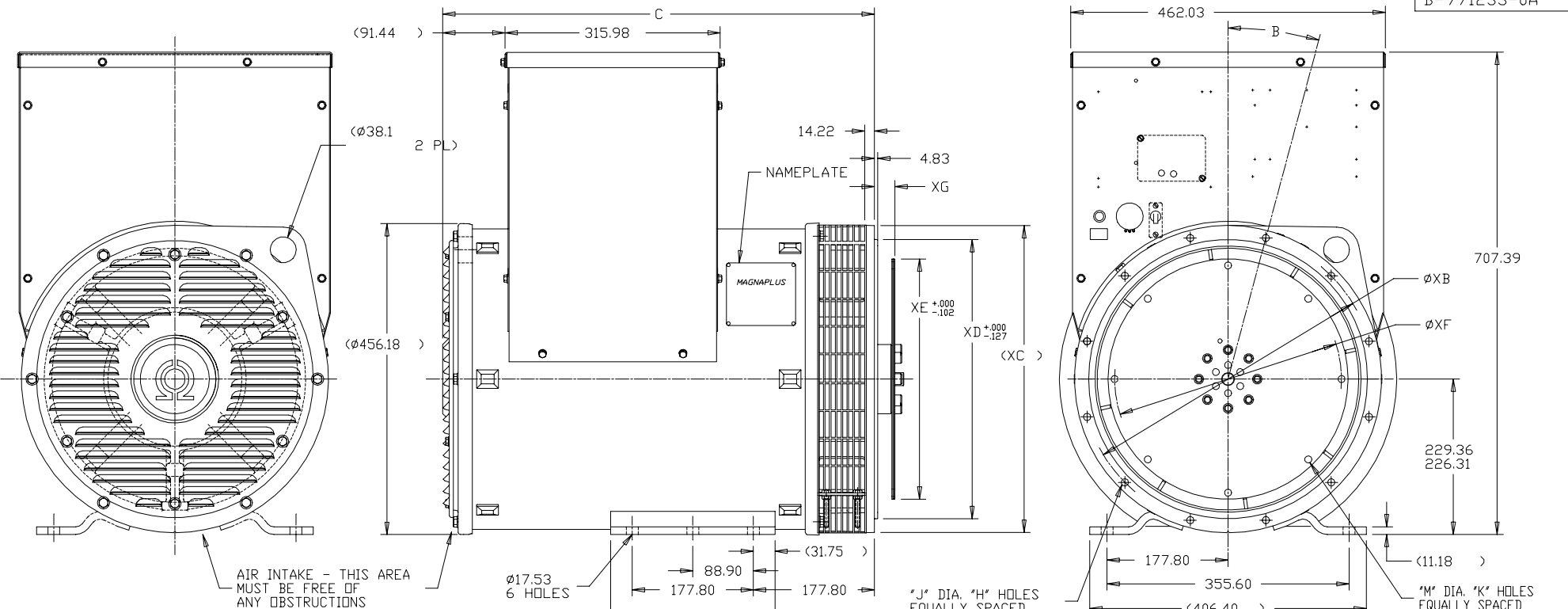


B-771233-0A



MTG CODE	ADAPTER							DRIVE DISC							MTG CODE	ADAPTER							DRIVE DISC					
	SAE	H	J	XB	XC	XD	B	SAE	K	M	XE	XF	XG	XJ		SAE	H	J	XB	XC	XD	B	SAE	K	M	XE	XF	XG
G	#4	12	10.67	381.00	450.85	361.95	15°	#7 1/2	8	8.64	241.27	222.25	30.23	15.75	-	#3	12	10.67	381.00	450.85	361.95	15°	PERKINS MEXICO	8	13.46	466.70	438.15	16.76
C	#4	12	10.67	381.00	450.85	361.95	15°	#8	6	10.41	263.50	244.35	61.98	47.75	K	#2	12	10.67	466.85	488.95	447.68	15°	#10	8	10.41	314.30	295.15	53.85
Y	#4	12	10.67	381.00	450.85	361.95	15°	#10	8	10.41	314.30	295.15	53.85	26.96	B	#2	12	10.67	466.85	488.95	447.68	15°	#11 1/2	8	10.41	352.40	333.25	39.62
X	#3	12	10.67	428.75	450.85	409.58	15°	#8	6	10.41	263.50	244.35	61.98	22.35	N	#2	12	10.67	466.85	488.95	447.68	15°	DELCO 15.50	8	16.76	393.67	352.55	18.29
D	#3	12	10.67	428.75	450.85	409.58	15°	#10	8	10.41	314.30	295.15	53.85	14.22	E	#1	12	12.19	530.35	552.45	511.18	15°	#11 1/2	8	10.41	352.40	333.25	39.62
Z	#3	12	10.67	428.75	450.85	409.58	15°	DELCO 12.75	4	13.46	323.82	279.40	0.00	0.00	F	#1	12	12.19	530.35	552.45	511.18	15°	#14	8	13.46	466.70	438.15	25.40
A	#3	12	10.67	428.75	450.85	409.58	15°	#11 1/2	8	10.41	352.40	333.25	39.62	0.00	H	#1	12	12.19	530.35	552.45	511.18	15°	DELCO 17.75	8	16.76	450.82	393.70	18.29

U.S. CUSTOMARY : D.L. INCHES METRIC : D.L. METRIC		5	12-03-1998	229.36/226.31 WAS 228.60/227.08 CN-8406	DRS	✓	MAX. SURFACE ROUGHNESS UNLESS NOTED OTHERWISE	UNLESS OTHERWISE SPECIFIED DIMENSIONS ARE IN MILLIMETERS TOL. DN XX± 1.52 XXX±.127 XXXX±.0127 ANGLES± 7'30"	
		4	09-16-1997	REVISED DRIPCOVER TO LOUVERED CN-8288	DRS		MATL SPEC	DRAWN DA 05-19-1994	
		3	09-16-1997	ADDED NEW DRIP COVER CN 7161	KL		FINISH	CHKD BY PR 05-19-1994	
		REV	DATE	CHANGE	NAME	PART NAME OUTLINE - METRIC 361-362 MAGNAPLUS 1 BRG - STD CONN. BOX		APPD BY LS 05-19-1994	
		PURCHASED			DISTRIBUTION - W - L - W - LM			CADD FILE NO. 7712330A	

FRAME	C
361	633.98
362	725.93

