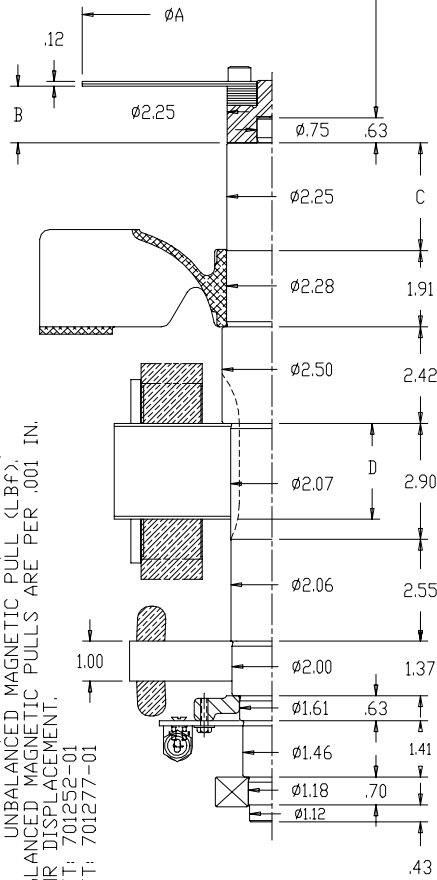


C.G. DISTANCES REFERENCED FROM THIS POINT



NOTES:

- 1- UNITS: WGT (LBm), WK ($\sqrt{LBm \cdot FT}$), \sqrt{CG} (IN), UNBALANCED MAGNETIC PULL (LBF), UNBALANCED MAGNETIC PULLS ARE PER .001 IN.
- 2- UNBALANCED MAGNETIC PULLS ARE PER .001 IN.
- 3- ROTOR DISPLACEMENT.
- 3a- SHAFT: 701252-01
- 3a- SHAFT: 701277-01

DASH	SAE DISC#	SHAFT			DISCS & SPACERS			FAN			MAIN ROTOR			EXCITER			TOTAL			B-772105				WDG. NO.	UNBALANCED MAGNETIC PULL MAIN ROTOR
		WGT	WK ²	CG	WGT	WK ²	CG	WGT	WK ²	CG	WGT	WK ²	CG	WGT	WK ²	CG	WGT	WK ²	CG	A	B	C	D		
1	6.5	16	.1	9.01	9	.3	-.57	4	.4	4.18	25	16	8.41	11	.6	13.61	65	3.0	7.93	8.50	0	2.70	1.50	1511	12
2	7.5	16	.1	9.01	9	.3	-.57	4	.4	4.18	25	16	8.41	11	.6	13.61	65	3.0	7.93	9.50	0	2.70	1.50		12
3	8	16	.1	9.01	10	.4	.60	4	.4	4.18	25	16	8.41	11	.6	13.61	66	3.1	7.98	10.38	1.25	2.70	1.50		12
4	10	16	.1	9.01	11	.7	.32	4	.4	4.18	25	16	8.41	11	.6	13.61	67	3.4	7.83	12.38	.94	2.70	1.50		12
5	11.5	16	.1	9.01	12	1.0	-.20	4	.4	4.18	25	16	8.41	11	.6	13.61	68	3.7	7.62	13.88	.38	2.70	1.50		12
6	DELCO 12.75	15	.1	7.81	11	.7	-.57	4	.4	2.98	25	16	7.21	11	.6	12.41	66	3.4	6.66	12.75	0	1.50	1.50		12
7	6.5	16	.1	9.01	9	.3	-.57	4	.4	4.18	28	18	8.54	11	.6	13.61	68	3.2	8.01	8.50	0	2.70	1.75	1500	15
8	7.5	16	.1	9.01	9	.3	-.57	4	.4	4.18	28	18	8.54	11	.6	13.61	68	3.2	8.01	9.50	0	2.70	1.75		15
9	8	16	.1	9.01	10	.4	.60	4	.4	4.18	28	18	8.54	11	.6	13.61	69	3.3	8.05	10.38	1.25	2.70	1.75		15
10	10	16	.1	9.01	11	.7	.32	4	.4	4.18	28	18	8.54	11	.6	13.61	70	3.6	7.90	12.38	.94	2.70	1.75		15
11	11.5	16	.1	9.01	12	1.0	-.20	4	.4	4.18	28	18	8.54	11	.6	13.61	71	3.9	7.71	13.88	.38	2.70	1.75		15
12	DELCO 12.75	15	.1	7.81	11	.7	-.57	4	.4	2.98	28	18	7.34	11	.6	12.41	69	3.6	6.74	12.75	0	1.50	1.75	15	
13	6.5	16	.1	9.01	9	.3	-.57	4	.4	4.18	33	22	8.78	11	.6	13.61	73	3.6	8.15	8.50	0	2.70	2.25	1502	19
14	7.5	16	.1	9.01	9	.3	-.57	4	.4	4.18	33	22	8.78	11	.6	13.61	73	3.6	8.15	9.50	0	2.70	2.25		19
15	8	16	.1	9.01	10	.4	.60	4	.4	4.18	33	22	8.78	11	.6	13.61	74	3.7	8.19	10.38	1.25	2.70	2.25		19
16	10	16	.1	9.01	11	.7	.32	4	.4	4.18	33	22	8.78	11	.6	13.61	75	4.0	8.05	12.38	.94	2.70	2.25		19
17	11.5	16	.1	9.01	12	1.0	-.20	4	.4	4.18	33	22	8.78	11	.6	13.61	76	4.3	7.87	13.88	.38	2.70	2.25		19
18	DELCO 12.75	15	.1	7.81	11	.7	-.57	4	.4	2.98	33	22	7.58	11	.6	12.41	74	4.0	6.88	12.75	0	1.50	2.25	19	

1		11-1-94	NEW DRAWING	10190	DA	<input checked="" type="checkbox"/> SURFACE ROUGHNESS UNLESS NOTED OTHERWISE UNLESS OTHERWISE SPECIFIED DIMENSIONS ARE IN INCHES TOL. ON XX± XXX±.005 XXXX±.0005 ANGLES±		DRAWN BY DA 10-27-94 CHKD BY PR 11-1-94 APPD BY GJM 11-1-94
REV	DATE	CHANGE			NAME	PART NAME ROTOR WT & WR 281 FR. MAGNAPLUS 4 POLE - STD 1 BRG DISTRIBUTION - WX - LX - WX - LM		DRWG NO B-772105 PAGE 1 OF 4
						CADD FILE NO. 772105P1		

